

CHANGE: RNAV BOX

**STANDARD DEPARTURE CHART -
INSTRUMENT (SID) - ICAO**

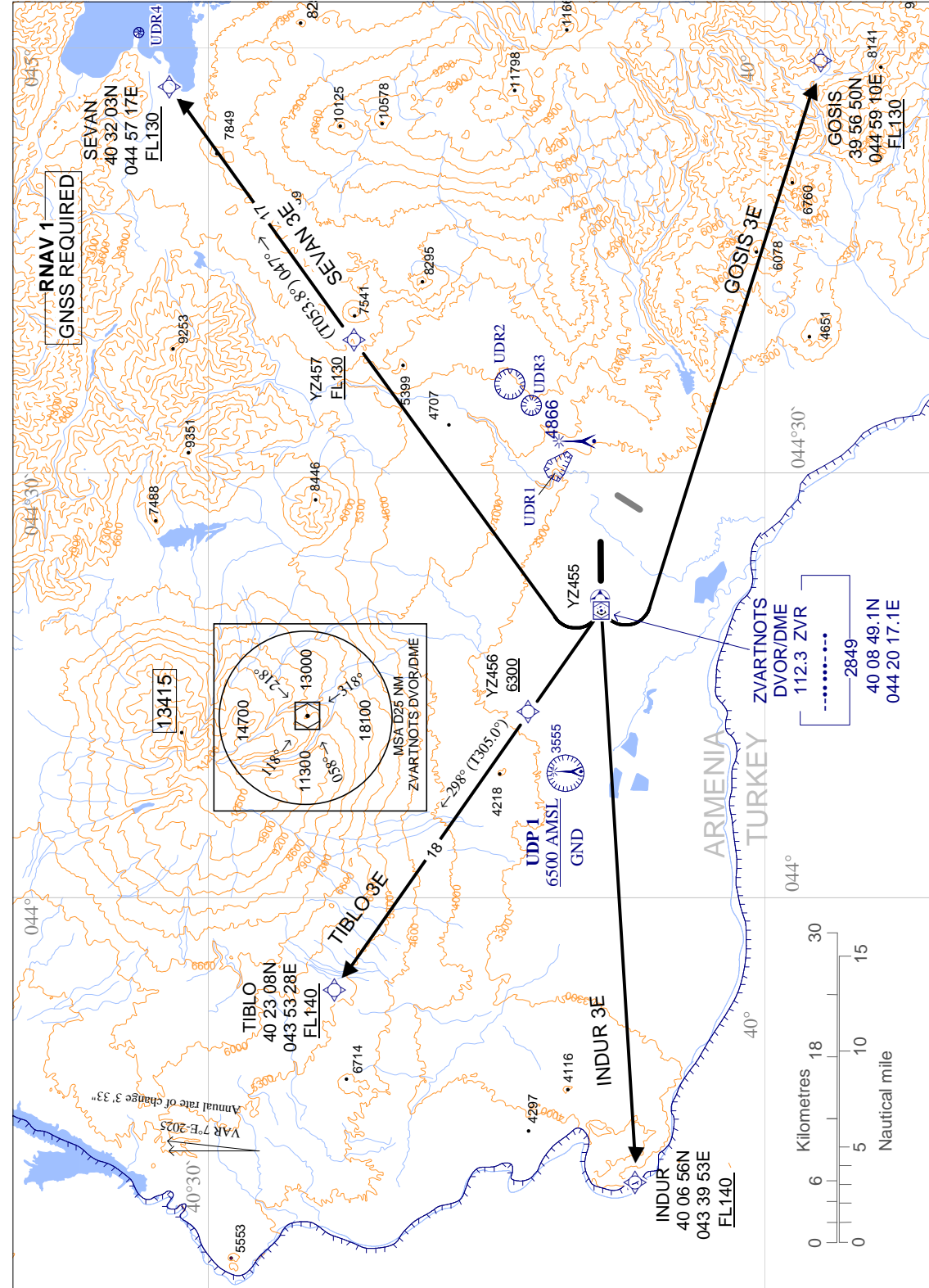
AD ELEV 2838
THR RWY 26 ELEV 2838

TRANSITION ALTITUDE 11500

ATIS
YEREVAN / GROUND 119.5
YEREVAN / TOWER 119.0
YEREVAN / APP 128.0
YEREVAN / APP 126.0

**YEREVAN / Zvartnots
RNAV RWY 26**

TIBLO 3E, SEVAN 3E
GOSIS 3E, INDUR 3E



WARNING:

- ALTITUDES & ELEVATIONS ARE IN FEET

- TRACKS ARE MAGNETIC

- TRACKS IN BRACKETS ARE TRUE

- DISTANCES ARE IN NM

- UDP 1 - 401044N 0440848E

RADIUS 1 NM

- UDR 1 - 401153N 0443012E-401141N 0443047E

-401039N 0443127E-401022N 0443107E

-401049N 0442949E-401107N 0442919E

-401139N 0442936E-401153N 0443012E

6000 FT AMSL / GND

- UDR 2 - 401344N 0443612E

RADIUS 0.8 NM 5500FT AMSL/GND

- UDR 3 - 401234N 0443442E

RADIUS 0.5 NM 6000FT AMSL/GND

UDR 4 - 403344N 0450102E

RADIUS 0.3 NM 8100FT AMSL/GND

NOTES:

- Contact Yerevan Approach immediately after take-off.

- Standard Instrument Departure Routes are also minimum noise routings.

- Strict adherence within the limits of performance criteria is mandatory.

- If unable to comply with SID, climb gradients or non-standard clearance issued, advise ATC prior to take-off and request alternative clearance.

- During initial turns Max IAS 210 bank angle 20°

**RNAV 1
GNSS REQUIRED**

